

KALPRO

Digital Solutions

Redefining Your Digital Solutions



Digital Solutions

4078 Kingswood Road
Citywest, Dublin 24

Sales 01 413 6462
Email Info@kalpro.ie
Web <http://www.kalpro.ie>



KALPRO
Digital Solutions

Using our industry expertise Kal Pro are fully equipped to provide complete turnkey solutions; developing software to be used alongside the superior hardware that we supply. With a diverse & wide product range, we are your one-stop-shop for all Digital Signage projects.

- From 10" POS displays to colossal 10x10 Video Walls
- Comprehensive range of screen sizes
- 24/7 usage
- High Brightness Monitors, IR and PCAP Touch Screens, Tablet Style Android Advertising Displays, IP Rated Outdoor Screens
- Range of backend software to suit every solution
- Cost-effective solutions that anybody can use, regardless of your level of technical knowledge; ideal for SMEs.
- We can also provide more comprehensive solutions for larger corporate projects that allow you to control, monitor and update a network of screens all over the world through our online portal

We know how to get the balance just right so that we can provide cost-effective, stylish and robust solutions that are suitable for use in public spaces. Get in touch today to discuss your ideal solution!

Proud Distributor of

iiyama

@lsee

PRO DVX
THE ART OF DIGITAL VIEWING



Content

Advertising Displays

1

Android Advertising Displays

2

Android Freestanding Digital Totem

Menu Boards

3

Network Digital Menu Board

Monitors & Video Wall Displays

4

LCD Video Wall Displays

5

Professional Monitors

Window Displays

7

Brightness Monitors

8

High Brightness Monitors

9

Digital Rod Displays

Outdoor Displays

10

Outdoor Advertising Displays

11

Outdoor Freestanding Digital Totem

Touch Screens & Media Players

12

PCAP Touch Screens

13

Infrared Freestanding Touch Screen Totem

14

Standalone Android Media Player

16

Interactive Touch Display

17

50"Mirror PCAP Touch Screen with Dual OS

Integrated Android Display

19

Integrated Android Display 15.6"

20

Integrated Android Display 15.6" POE

CMS

21

Content Management System

22

Audience Measurement

Android Advertising Display



Key Features

Plug and Play
IPS Panel
Wall mounted
LED Backlight
Giant Tablet Styling
Integrated POD OS Systems
IPS Panel
Connect Devices
24/7 Commercial Use



Plug and Play



24/7 Usage



Android Media Player



AV Inputs



Display Size	19 Inch	22 Inch	32 Inch	43 Inch	50 Inch	55 Inch
Resolution	1920x1080					
Display Area (mm)	408.6x229.6	478x269	699x394	942x525	1075.6x605.4	1211x682
Aspect Ratio	16:9					
Brightness (cd/m ²)	450					
Colour	16.7M					
Speaker Type	5W, 8Ω (x2)					
Video	HDMI					
Audio	Audio Socket (3.5mm)					
Power Consumption (W)	16	22	52	65	75	85
Input Voltage	AC110~240V (50Hz~60Hz)					
Unit Size (WxHxD mm)	501x322x36	590x383x46	814x504x63	1045x638x63	1199x736x44	1366x837x50.1
Package Size (WxHxD mm)	580x430x120	662x477x131	956x615x164	1175x775x215	1357x867x176	1525x1016x214
Net Weight (kg)	5.9	7.25	13.1	22.8	28.05	39.7
Gross Weight (kg)	7.8	9.6	16.9	30.2	37	49.7
Included	Wall Mount, Scheduling Software, Remote Control, Key, User Manual					

Freestanding Digital Totem



Key Features

Plug and Play
IPS Panel
LED Backlight
Integrated POD OS Systems
IPS Panel
Internal Lock
Commercial Grade
Floor Free standing
24/7 Commercial Use



Plug and Play



24/7 Usage



Android Media Player



AV Inputs



Display Size	50 Inch	55 Inch
Resolution	1080x1920	
Display Area (mm)	618.4x1097.8	682.4x1211.6
Aspect Ratio	16:9	
Brightness (cd/m ²)	450	
Colour	16.7M	
Viewing Angle	178°	
Contrast Ratio	4000:1	
Speaker Type	6W, 8Ω (x2)	
Video	HDMI, VGA	
Audio	Audio Socket (3.5mm)	
Power Consumption (W)	100	120
Input Voltage	AC110~240V (50Hz~60Hz)	
Unit Size (WxHxD mm)	747x1850x50	813x1960x50
Package Size (WxHxD mm)	2000x865x565	2100x990x570
Net Weight (kg)	72	111
Gross Weight (kg)	82	136

Network Digital Menu Boards



Key Features

Integrated Android Media Player
Narrow Bezel
Environmentally Friendly Power Timer
Commercial Grade 20/7 or 16/7
LED Backlight
IPS Panel
Portrait/Landscape Orientation
IPS Panel



Wireless Wi-Fi
Connection



24/7 Usage



Eco Power Timer



LED Backlight



Display Size	32 Inch	43 Inch	50 Inch	55 Inch
Resolution	1920x1080			
Display Area (mm)	698.4x392.9	941.2x529.42	1073.78x604	1209.6x680.4
Aspect Ratio	16:9			
Brightness (cd/m²)	450			
Colour	16.7M			
Viewing Angle	178°			
Contrast Ratio	4000:1			
Speaker Type	5W, 8Ω (x2)			
Video	HDMI, VGA			
Audio	Audio Socket (3.5mm)			
Power Consumption (W)	38	45	55	65
Input Voltage	AC110~240V (50Hz~60Hz)			
Unit Size (WxHxD mm)	723.4x422.9x68	963.6x557.9x60.2	1096.16x632.5x59.3	1232x708.9x59.3
Package Size (WxHxD mm)	865x555x210	1150x700x210	1245x770x190	1385x845x190
VESA Holes (mm)	400x200/500x200	400x200	400x200/400x400	
Net Weight (kg)	11.65	15.1	23.6	28
Gross Weight (kg)	15.05	19	28.5	34.4
Included	Scheduling Software, Remote Control, Key, User Manual			

LCD Video Wall Displays

Key Features

Multiple Configurations
IPS Panels
Portrait/Landscape Orientation
Environmentally Friendly Power Timer
RS-232 Control
Advanced Temperature Control
Commercial Grade
Super Narrow Bezel

IPS



Plug and Play



24/7 Usage



Eco Power Timer



LED Backlight



Display Size	19 Inch	22 Inch	32 Inch	43 Inch	50 Inch	55 Inch
Resolution	1920x1080					
Display Area (mm)	408.6x229.6	478x269	699x394	942x525	1075.6x605.4	1211x682
Aspect Ratio	16:9					
Brightness (cd/m ²)	450					
Colour	16.7M					
Speaker Type	5W, 8Ω (x2)					
Video	HDMI, VGA					
Audio	Audio Socket (3.5mm)					
Power Consumption (W)	16	22	52	65	75	85
Input Voltage	AC110~240V (50Hz~60Hz)					
Unit Size (WxHxD mm)	501x322x36	590x383x46	814x504x63	1045x638x63	1199x736x44	1366x837x50.1
Package Size (WxHxD mm)	580x430x120	662x477x131	956x615x164	1175x775x215	1357x867x176	1525x1016x214
Net Weight (kg)	5.9	7.25	13.1	22.8	28.05	39.7
Gross Weight (kg)	7.8	9.6	16.9	30.2	37	49.7
Included	Wall Mount, Scheduling Software, Remote Control, Key, User Manual					

Professional Monitors

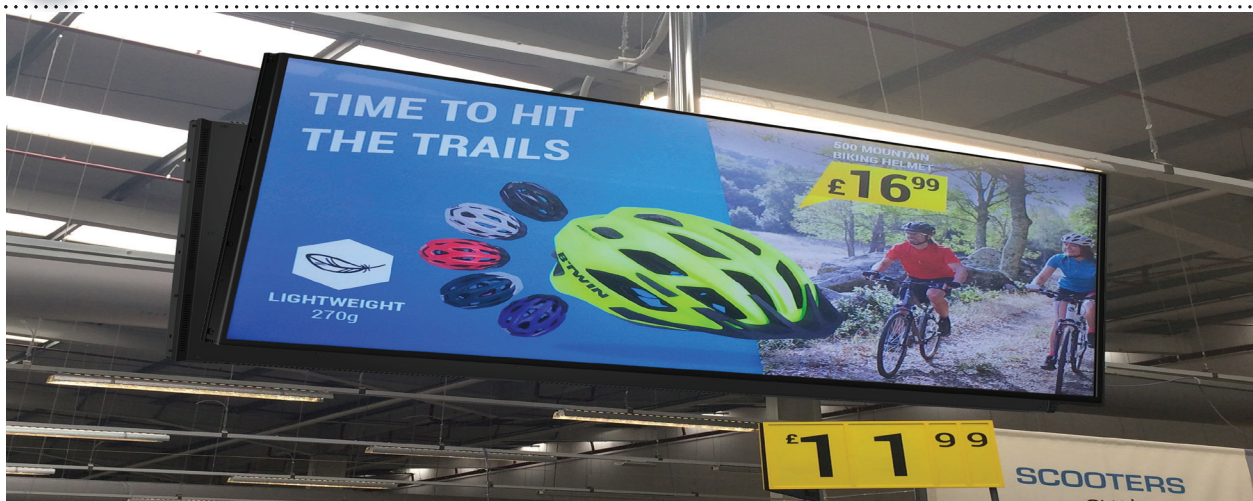


Key Features

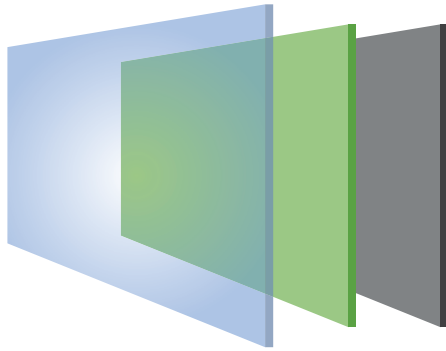
IPS Panel
Portrait/Landscape Orientation
LED Backlight
IPS Panel
Commercial Grade 20/7 or 16/7



Also Available In 32" 43" 46" 49" 50" 55" 65" 75" 85"



Display Size			
Resolution	1920x1080		3840x2160
Display Area (mm)	1432.5x807	1549.44x871.56	1863.5x1049.63
Pixel Pitch	0.744x0.744	0.807x0.807	0.970x0.970
Aspect Ratio	16:9		
Brightness (cd/m²)	450		
Colour	16.7M		
Viewing Angle	178°		
Contrast Ratio	5000:1	4000:1	2000:1
Speaker Type	2x2W, 4Ω		
Video	HDMI, VGA, Audio Socket (3.5mm)		HDMI (1080p), HDMI (4K), VGA, DVI, AV1, AV2, YPbPr, RGB/HV, Audio Socket (3.5mm)
Power Consumption (W)	280	350	420
Input Voltage	AC110~240V(50Hz~60Hz)		
Unit Size (WxHxD mm)	1468.5x843x91.21	1612x934x83.1	1915x1107x93
Package Size (WxHxD mm)	1650x1030x340	1800x1110x340	2140x1450x450
VESA Holes (mm)	600x400	600x500	600x400/600x800
Net Weight (kg)	57	63.2	83.5
Gross Weight (kg)	66.1	68	175.5
Included	Remote Control, User Manual, Power Lead		



IPS Panel
(Smaller Professional Monitors only)



Plug and Play



Accurately displays an image quality and colour depth at a 178° ultra wide viewing angle. From bright sunlight to the most challenging lighting environments these displays are designed to reproduce and maintain the ultimate colour temperature for lifelike images. The panel is also optimised for mounting in either landscape or portrait orientation.

High Bright Monitors



Key Features

Plug and Play
Portrait/Landscape Orientation
Commercial Grade 16/7 or 20/7
Integrated Android Media Player
RS-232 Control
Connect Device
LED Backlight
Advanced Temperature Control
High Bright Panel
1500 CDN



Sunlight Readable



24/7 Usage



LED Backlight



Plug and Play



Display Size	32 Inch	43 Inch	47 Inch	55 Inch	65 Inch
Resolution	1920x1080				
Display Area (mm)	698.4x392.85	941.18x529.42	1044x589	1210.8x683	1428.5x803.5
Aspect Ratio	16:9				
Brightness (cd/m²)	1,500		2000	1,500	
Colour	16.7M				
Viewing Angle	178°				
Contrast Ratio	4000:1	3000:1	5000:1		
Speaker Type	2W, 5Ω (x2)				
Video	HDMI, VGA				
Audio	Audio Socket (3.5mm)				
Power Consumption (W)	180	230	300	340	420
Input Voltage	AC110~240V (50Hz~60Hz)				
Unit Size (WxHxD mm)	762x458x78.5	987.2x575.1x57.2	1103.2x647.6x112	1275.6x746.4x101.8	1539x908.4x107
VESA Holes (mm)	400x200	400x400	600x400	400x400/400x500	600x400
Included	Scheduling Software, Remote Control, User Manual				

Ultra High Brightness Monitors



Key Features

Plug and Play
Blackening Defect Resistant
Integrated Android Media Player
Connect Devices
Portrait/Landscape Orientation
Commercial Grade
Advanced Temperature Control
RS-232 Control
Ultra High Brightness Panel
2500 CDN



Direct Sunlight Readable



24/7 Usage



Plug and Play



Android Media Player



Display Size	19 Inch	22 Inch	32 Inch	43 Inch	50 Inch	55 Inch
Resolution	1920x1080					
Display Area (mm)	408.6x229.6	478x269	699x394	942x525	1075.6x605.4	1211x682
Aspect Ratio	16:9					
Brightness (cd/m ²)	450					
Colour	16.7M					
Speaker Type	5W, 8Ω (x2)					
Video	HDMI, VGA					
Audio	Audio Socket (3.5mm)					
Power Consumption (W)	16	22	52	65	75	85
Input Voltage	AC110~240V (50Hz~60Hz)					
Unit Size (WxHxD mm)	501x322x36	590x383x46	814x504x63	1045x638x63	1199x736x44	1366x837x50.1
Package Size (WxHxD mm)	580x430x120	662x477x131	956x615x164	1175x775x215	1357x867x176	1525x1016x214
Net Weight (kg)	5.9	7.25	13.1	22.8	28.05	39.7
Gross Weight (kg)	7.8	9.6	16.9	30.2	37	49.7
Included	Wall Mount, Scheduling Software, Remote Control, Key, User Manual					

Digital Rod Displays



Key Features

Plug and Play
Digital Light Pockets
Integrated Android Media Player
Commercial Grade
LED Backlight
Rod/Cable Powered Displays



Rod/Cable Powered Displays



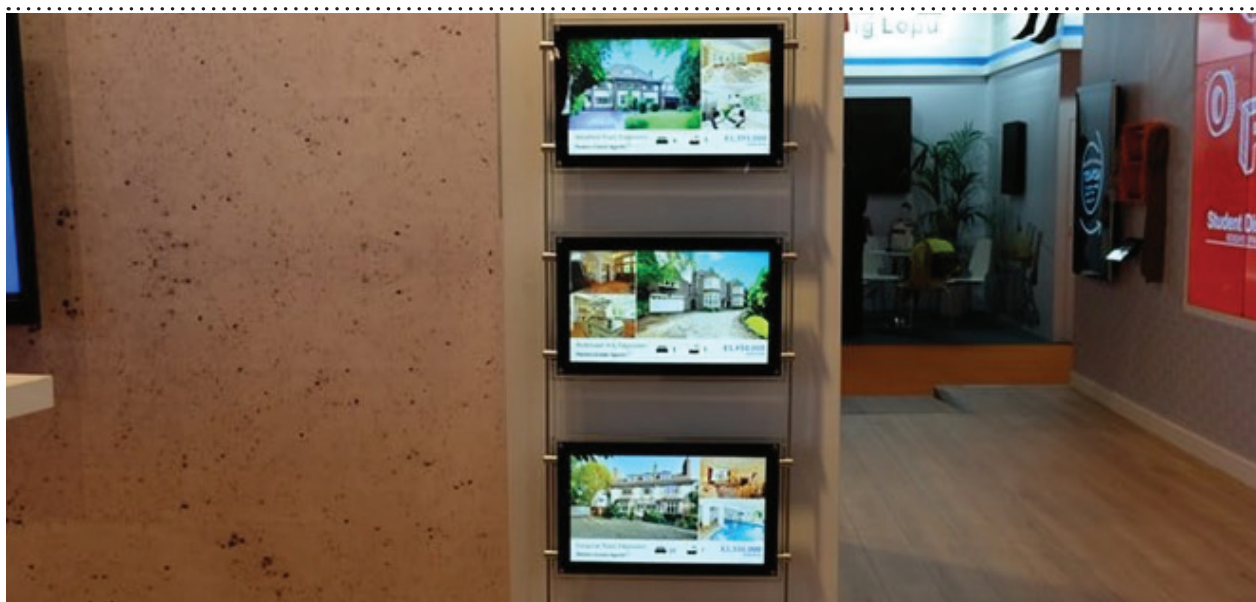
Plug and Play



Android Media Player

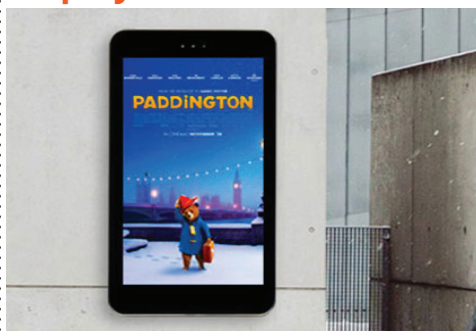


LED Backlight



Display Size	15 Inch
Resolution	1920x1080
Display Area (mm)	344.16x193.59
Aspect Ratio	16:9
Brightness (cd/m ²)	300
Colour	0.62M
Viewing Angle	89°
Contrast Ratio	700:1
Speaker Type	2W, 4Ω (x2)
Video	HDMI, VGA
Audio	Audio Socket (3.5mm)
Power Consumption (W)	18
Input Voltage	DC 12V
Unit Size (WxHxD mm)	260x434x37.23
Package Size (WxHxD mm)	348x489x121.5
Net Weight (kg)	3.8
Gross Weight (kg)	5.2
Included	Software, Remote Control, Key, User Manual

Outdoor Advertising Displays



Key Features

Ultra High Brightness Panel
Easy Updates
Lockable Wall Mount
Ambient Light Sensor
Advanced Temperature Control
Toughened Glass
Dust Tight
Anti-Reflective Glass
Sturdy Enclosure



Sunlight Readable



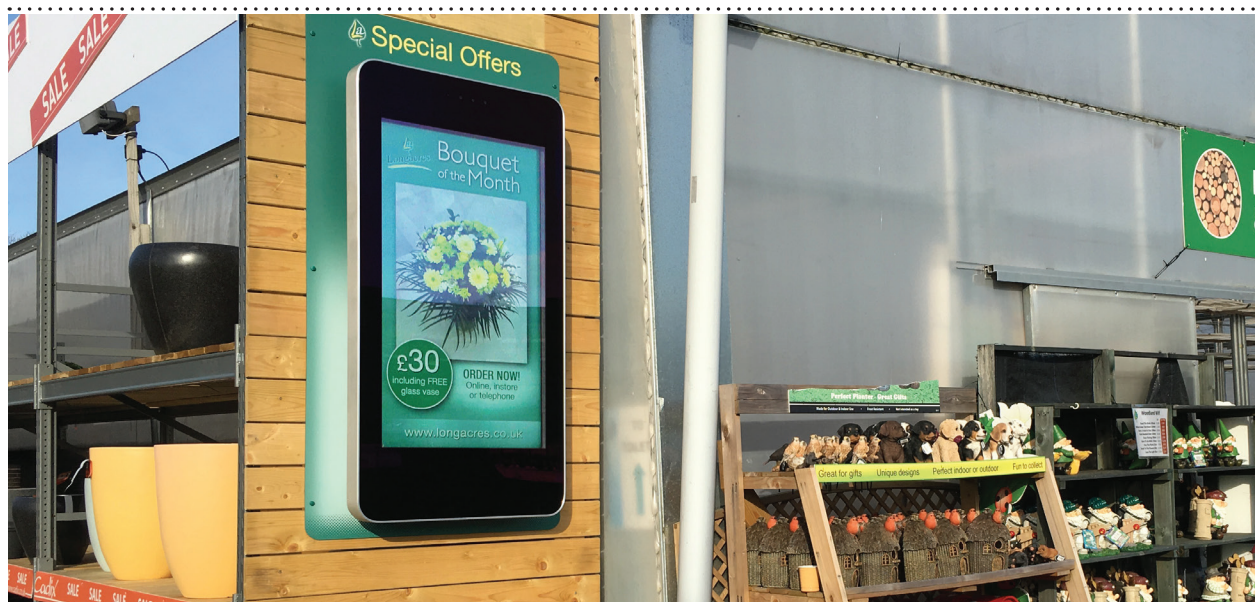
24/7 Usage



Android Media Player



Vandal Proof



Display Size	22 Inch	32 Inch	43 Inch	49 Inch	55 inch	65 Inch
Resolution	1080x1920					
Pixel Pitch	0.2537x 0.2537	0.36375x0.363750	0.1615x0.4845	0.565x0.565	0.21x0.63	0.744 x 0.744
Display Area (mm)	270x477	396x702	526x934	603x1073	686x1215	803.5x1428.5
Aspect Ratio	16:9					
Brightness (cd/m²)	2,500					
Colour	16.7 M					
Viewing Angle	178°					
Contrast Ratio	8000:1					
Video	HDMI, VGA					
Power Consumption (W)	130	190	250	300	430	550
Input Voltage	AC110~240V (50Hz~60Hz)					
Unit Size (WxHxD mm)	397x737x120	515x1040x130	670x1410x140	746x1500x140	817x1637x145	990x1910x140
Net Weight (kg)	20.05	36.2	58.75	74	76.5	95
Included	AC Power Cable, Remote Control, User Manual					

Outdoor Freestanding Digital Totem



Key Features

High Brightness Panel
Easy Maintenance
Easy Updates
Weather Proof
Internal Locker
Advanced Temperature Control
Removable Base
Toughened Glass
Dust Tight
Sturdy Enclosure



Sunlight Readable



24/7 Usage



Android Media Player



Weather Proof



Display Size	49 Inch	55 Inch
Resolution	1080x1920	
Pixel Pitch	0.5592x0.5592	0.21x0.63
Display Area (mm)	603x1073	686x1215
Aspect Ratio	9:16	
Brightness (cd/m²)	2,500	
Colour	1.06 Billion	1.073 G
Viewing Angle	178°	
Contrast Ratio	8000:1	
Video	HDMI, VGA	
Power Consumption (W)	530	580
Input Voltage	AC110~240V (50Hz~60Hz)	
Unit Size (WxHxD mm)	870x1940x180	960x2020x200
Net Weight (kg)	120	150
Included	AC Power Cable, Remote Control	

PCAP Touch Screens



Key Features

10-Point PCAP Touch Technology
IPS Panel
Built in Wi-Fi
Kiosk Touch Table
USB Ports
Commercial Grade 16/7 or 20/7
Connectivity
LED Back light
Mirror Finish Version
Portrait/Landscape Orientation



Integrated Dual OS



AV Inputs



Integrated Wi-Fi



Audio In/Out



Display Size	22 Inch	32 Inch	43 Inch	50 Inch	55 Inch
Resolution	1920x1080				
Display Area (mm)	478x269	701.4x395.8	942.5x530.5	1076x606	1211x682
Aspect Ratio	16:9				
Pixel Pitch (mm)	0.253x0.253	0.368x0.368	0.495x0.495	0.576x 0.576	0.634x 0.634
Brightness (cd/m²)	450				
Colour	16.7M				
Viewing Angle	178°				
Contrast Ratio	5000:1				
Touch Technology	Projected Capacitive				
Touch Points	10				
Glass Hardness	7H minimum				
Speaker Type	2W, 5Ω (x2)				
Inputs (when used as monitor)	HDMI, VGA, RS-232				
Audio Input (when used as monitor)	Audio Socket (3.5mm)				
Audio Output (internal PC)	Audio Socket (3.5mm)				
Power Consumption (W)	22	52	65	75	85
Input Voltage	AC110~240V (50Hz~60Hz)				
Unit Size (WxHxD mm)	590x383x50	814x504x69	1045.9x636.9x64.7	1186.6x716.6x65	1319.6x790.6x65
VESA Holes (mm)	100x100	400x200			
Included	Remote Control, User Manual, Power Cable, USB to USB Cable, Wi-Fi Aerial				

Infrared Freestanding Touch Screen Totems



Key Features

10-Point Infrared Touch Technology

IPS Panel

Built in Wi-Fi

Internal Locker

Free Integrated Castors

Commercial Grade

Giant Tablet Styling

LED Backlight

Dual OS

Add on Audio



Integrated Dual OS



AV Inputs



Integrated Wi-Fi



Audio In/Out



Display Size	50 inch	55 inch
Resolution	1080x1920	
Display Area (mm)	625.4x1106.4	686.4x1215.8
Aspect Ratio	9:16	
Pixel Pitch (mm)	0.565x 0.565	0.6342x 0.6342
Brightness (cd/m ²)	500	
Colour	16.7M	
Viewing Angle	178°	
Contrast Ratio	5000:1	
Touch Technology	Infrared	
Touch Points	10	
Glass Hardness	7H minimum	
Speaker Type	2W, 5Ω (x2)	
Video	HDMI, VGA	
Audio	Audio Socket (3.5mm)	
Input Voltage	AC110~240V (50Hz~60Hz)	
Unit Size (WxHxD mm)	766x1850x79.5	827x1947x79.5

Standalone Android Media Player



Key Features

Commercial Grade
Integrated Android Media Player
Environmentally Friendly Power Timer
Plug and Play
No Additional Hardware Required



Plug and Play



24/7 Usage



Android Media Player



AV Inputs



Standalone Android Media Player

Video	HDMI, VGA
Audio	Stereo Analog Audio Socket (3.5mm)
Power Consumption (W)	<5
Input Voltage	AC110~240V (50Hz~60Hz)
Unit Size (WxHxD mm)	162.5x35x103
Dimension of Box (WxHxD mm)	237.5x165x129
Net weight (Kg)	0.35
Gross Weight (Kg)	0.55
Operating Temperature	0°C to 50°C
Storage Temperature	-30°C to 60°C
Operating Humidity	10% to 80%
Included	HDMI Cable, Scheduling Software, Remote Control, User Manual

Interactive Whiteboard



Key Features

Stunning Enclosure
Etched Glass
Easy Access Ports and Controls
Stylus Set Included
No Additional Hardware Required
Freeze Frame Function
LED Backlight
File Sharing
Wireless Mirroring
Free Meeting Pad Software



Integrated Android PC



OPS PC Required



Integrated Wi-Fi



LED Backlight



Display Size	55 inch	65 inch	70 inch
Resolution	1920x1080		
Display Area (mm)	1213.8x684.4	1428.48x803.52	1538.88x865.62
Aspect Ratio		16:9	
Pixel Pitch (mm)	0.6342x 0.6342	0.744 x 0.744	0.8015x0.8015
Brightness (cd/m²)	500		
Colour	16.7M		
Colour Depth	8 Bit		
Viewing Angle	178°		
Contrast Ratio	4000:1	5000:1	
Lifespan	80,000 Hours		
Touch Technology	Infrared		
Touch Points	10		
Glass Hardness	7H minimum		
Response Time	≤5ms		
Touch Point Accuracy	±1.5mm		
Touch Resolution	32768x32768		
Speaker Output	15W, 8Ω (x2 Front)		
Front Inputs	N/A	Touch USBx1, HDMI x1, USB x3	
Side Inputs	DisplayPort, Touch USB, HDMI x 2, VGA, Audio In, USB 3.0 x 2, AV In, YPbPr, SD Card, RS232		
Outputs	AV Out, Audio Out, SPDIF		
Input Voltage	AC110~240V (50Hz~60Hz)		
Unit Size (WxHxD mm)	1282x752.2x74	1516.5x930.46x105	1633.1x997.7x112.8
Net Weight (Kg)	40.05	46.6	65.5
Gross Weight (Kg)	48.9	65.5	76
Package Size	1443x928x250	1750x1160x340	1865x1242x340
Included	User Manual (CD), Remote Control, Power Cable, USB A Male to USB A Male Cable (x1), USB A Male to USB B Male Cable (x1), Wi-Fi Aerial (x2), HDMI Cable, Magnetic Whiteboard Pen (x 2), Smart Pen (x2), Telescopic Pointer (x1), USB Screen Projection Dongle (x2)		



Full Android Control

With both Android and Windows operating systems installed on the integrated PC the Interactive Touch Display cannot be beaten on flexibility. Seamlessly switch your operating system with just the push of a button. With the huge number of apps available for Android and the world's most popular operating system in Windows the display is ready to take your meetings and lessons to the next level.



Wireless Mirroring

Mirror what is on your Windows, Android or Apple device without the need for messy cables with the wireless mirroring feature this display offers. Great for presenting and sharing content during meetings. Mirroring the display from your mobile, tablet or laptop has never been easier.



Freeze-Frame Function

If you are running the Interactive Touch Display from your laptop you can freeze the content mirrored from your device. This allows you to unplug your laptop and use it independently from the screen with the content still being displayed.

Windows OPS PC is Required

Experience the best of both worlds with an upgrade to add a Windows OPS PC directly into the rear of your Interactive Touch Display. Having the world's most popular operating system in Windows just a switch away from our MeetingPad Software offers the best in flexible working. Upgrading allows you to save space and avoid a tangle of messy wires that you used to get with attaching other laptops or PCs to your Interactive Touch Display.



50" Mirror PCAP Touch Screen with Dual OS



Key Features

Dual OS
USB Ports
LED Backlight
Built in Wi-Fi
Connectivity
Audio



Display Size	50 Inch
Resolution	1920x1080
Display Area (mm)	1076x606
Aspect Ratio	16:9
Pixel Pitch (mm)	0.576x 0.576
Brightness (cd/m ²)	450
Brightness with touch panel (cd/m ²)	383
Colour	16.7M
Viewing Angle	178°
Contrast Ratio	5000:1
Touch Technology	Projected Capacitive
Touch Points	10
Glass Hardness	7H minimum
Speaker Type	2W, 5Ω (x2)
Video Inputs (when used as monitor)	HDMI, VGA
Audio Input (when used as monitor)	Audio Socket (3.5mm)
Audio Output (internal PC)	Audio Socket (3.5mm)
Power Consumption (W)	75
Input Voltage	AC110~240V (50Hz~60Hz)
Unit Size (WxHxD mm)	1186.6x716.6x65



Key Features

10-Point PCAP Touch Technology

Using the most responsive and sensitive commercial touch technology available. Not affected by dust or debris on the screen surface.

Commercial Grade

Designed for use in commercial applications this screen can run 24/7. No external buttons or controls to avoid tampering.

Mirror Finish

The perfect balance between reflection and transparency is achieved with a combination of the 450cdm² brightness commercial panel used and the specially treated glass.

10 Point Touch



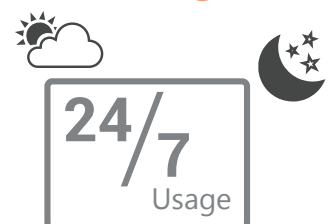
LED Backlight



Attach External



24/7 Usage



Integrated Android Display 15.6"



Key Features

RK3288, Cortex A17, Quad Core,
 Robust eMMC Flash Memory
 15.6" High viewing angle IPS panel
 RJ45 LAN Connector for a wired network
 connection, Wi-Fi, Bluetooth
 USB Connector
 Micro USB connector
 Open Source
 Pogo Pins for optional accessories
 VESA Mounts



Also Available In 10"15"18"21"24"27"32"



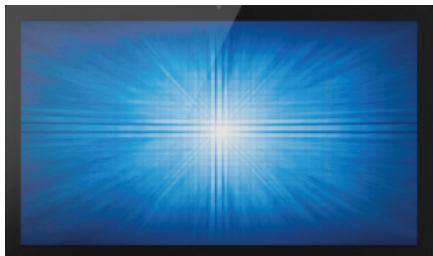
Standalone Android Media Player	
Screen size	15.6
Resolution	1920 x 1080
BacklightLED	Full-LED
Aspect Ratio	16:9
Brightness	300 cd/m2
Touch	Projected Capacitive (10 Points)
CPU	RK3188, Cortex A9, 1.6GHz, Quad Core
System Memory	2GB DDR3 SDRAM
Internal Storage	8GB eMMC Flash
Android Version	Android 4.4 or higher
I/O PortsUSB	USB, Mini USB, HDMI
Networking	LAN RJ45 Wired, Wi-Fi and Bluetooth
Video Support	MKV, TS, FLV, AVI, VOB, MPG, DAT, ASF, RM, MOV, 3GP, MP4, WMV
Audio Support	MP2, MP3, WMA, WAV, AAC, OGG, ASF
Photo Support	JPG, BMP, GIF
Media Card Support	SD Card

Integrated Android Display 15.6" POE



Key Features

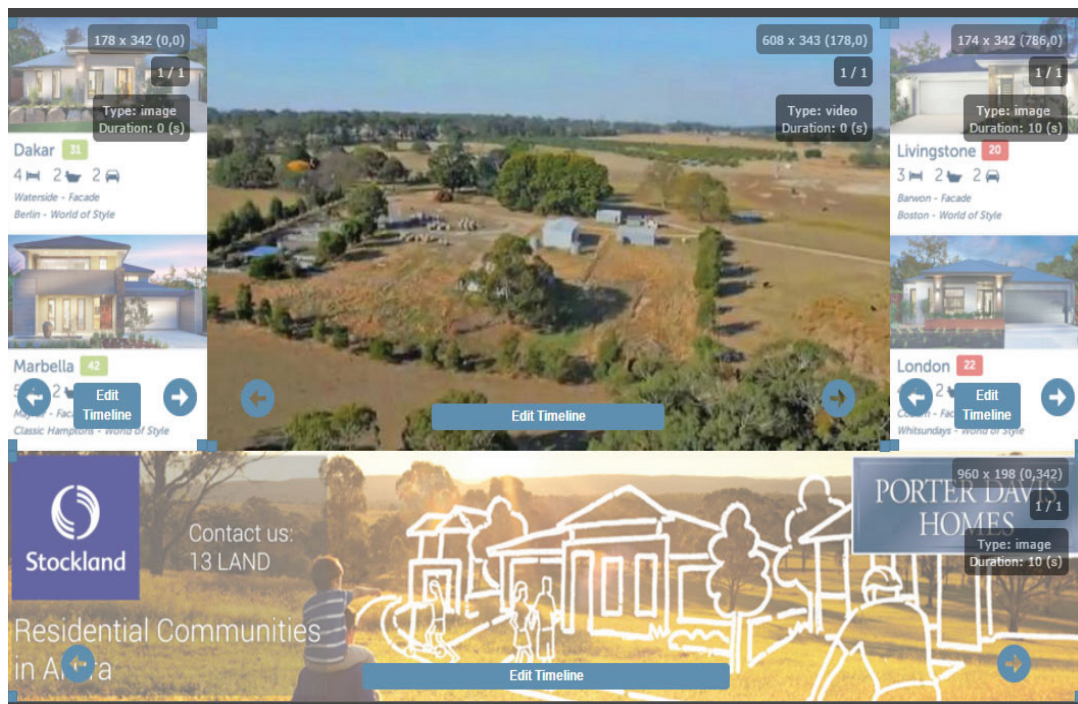
Power over Ethernet
RK3288, Cortex A17, Quad Core, Robust
eMMC Flash Memory
15.6" High viewing angle IPS panel
RJ45 LAN Connector for a wired network
connection, Wi-Fi, Bluetooth
USB Connector
Micro USB connector
Open Source
Pogo Pins for optional accessories
VESA Mount



Standalone Android Media Player	
Screen size	15.6
Resolution	1920 x 1080
BacklightLED	Full-LED
Aspect Ratio	800:1
Brightness	300 cd/m2
Touch	Projected Capacitive
CPU	Cortex A17, 2.0 GHz, Quad Core
System Memory	2GB DDR3 SDRAM
Internal Storage	8GB eMMC Flash
Android Version	Android 6.0>
I/O PortsUSB	USB, Mini USB, HDMI
Networking	LAN RJ45 Wired, Wi-Fi and Bluetooth
Video Support	MKV, TS, FLV, AVI, VOB, MPG, DAT, ASF, RM, MOV, 3GP, MP4, WMV
Audio Support	MP2, MP3, WMA, WAV, AAC, OGG, ASF
Photo Support	JPG, BMP, GIF
Media Card Support	SD Card

Content Management Solutions

Nordmende Content Management System enables you to customise your content so you can target your desired audience, at the right time and in the right location using rich, relevant and timely content. Our easy to use interface allows you to build your own content that your audience will love to engage with. Use your own media content to create your custom layouts. Deploy your content to anywhere in the world with just the push of a button. You can designate specific user privileges, schedule your content to appear at set times and dates and even preview your content from the comfort of your PC, tablets or touchscreens.



Our easy to use interface allows you to build your own engaging content.

Use your own media content to create your own custom layouts.

Deploy your content anywhere in the world with just the push of a button.

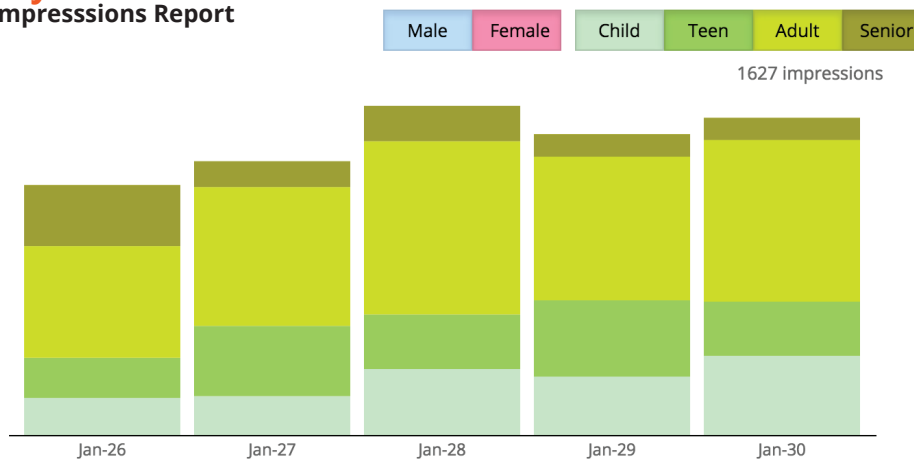
- Remote Management Server (RMS) gives administrators the ability to remotely access devices for support purposes, saving on maintenance costs while managing software and OS. Full user interface (UI) access, file and process management, console access, while also sending notifications and generating health reports.
- Users can schedule what they want to display, where and when they want; Instillo Signage supports combining layout, creating campaign and the set-up of recurring schedules in advance to deploy at pre-determined times for a set or specific period of time.
- Hardware extensibility allows connection of external hardware like barcode, QR code and NFC readers, printers etc. While software extensibility allows adding plug-ins for voice, visual and touch capabilities.

AUDIENCE MEASUREMENT

Optimise marketing spend and inventory control, streamline staffing levels and deliver an attractive return on investment by understanding your audience.

- Maximise reach and improve sales by strategically targeting valuable viewers using tailored content to suit their gender and age.
- Target your message. Why waste opportunities to deliver the right message to the right audience? Our intelligent solution is triggered to deliver relevant messages based on audience demographics, gender, age and even mood!

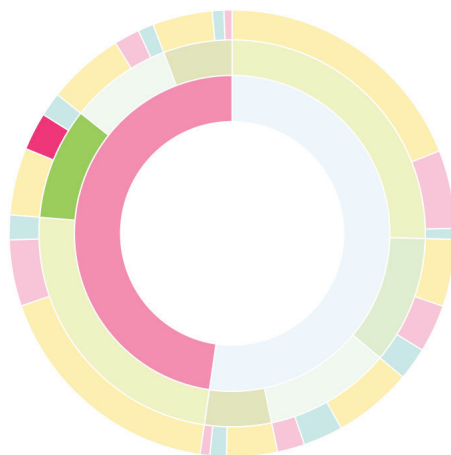
Key Features Impressions Report



Interactive Drill Down Report



2.74%
of screen views
473 viewers



The solution itself provides businesses of all sizes and budgets with the opportunity to increase sales, optimise marketing spend and inventory control, streamline staffing levels and deliver an attractive return on investment , by understanding consumer behaviour and responses to messages, broadcasts and promotions.

Signal Corporation

NORDM

LENDE



